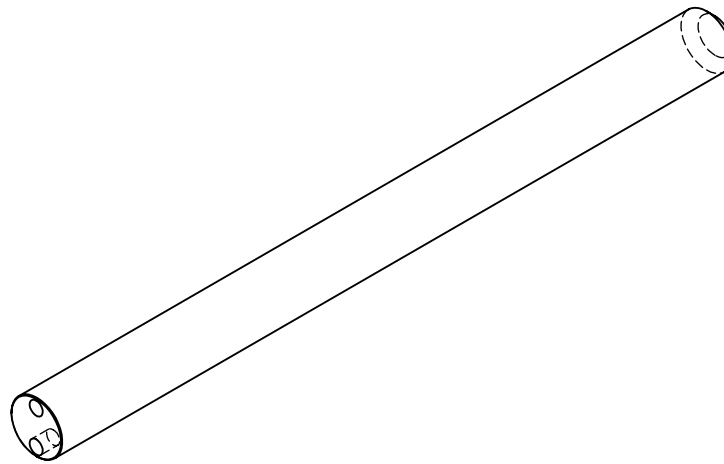
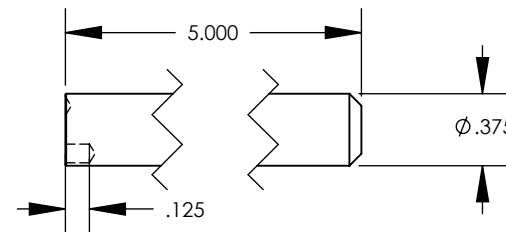
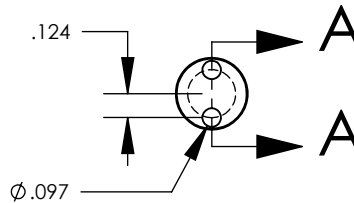


THE INFORMATION CONTAINED IN THIS DRAWING IS THE SOLE PROPERTY OF RAY-VIN, INC. ANY REPRODUCTION IN PART OR WHOLE WITHOUT THE WRITTEN PERMISSION OF RAY-VIN, INC. IS PROHIBITED. CONTACT:
 RAY-VIN, INC., 1844 MT CELLO RD
 MARIANNA, FL 32448-5365
 1-850-482-7562 email: rvb@ray-vin.com
 www.ray-vin.com



SECTION A-A



| ITEM NO. | PART OR IDENTIFYING NO. | NOMENCLATURE OR DESCRIPTION | MATERIAL SPECIFICATION | QTY REQD |
|---|-------------------------|---|------------------------|--|
| PARTS LIST | | | | |
| UNLESS OTHERWISE SPECIFIED DIMENSIONS ARE IN INCHES | | CAD GENERATED DRAWING, DO NOT MANUALLY UPDATE | | RAY-VIN, INC. AR Bolt Catch Pin Punch/Driver Tool |
| TOLERANCES ARE: | | APPROVALS | DATE | |
| FRACTIONS ±0.015 | DECIMALS .XX ±0.010 | DRAWN RVB | 5Apr05 | |
| ANGLES ±0.5° | | CHECKED | | |
| MATERIAL STEEL | | RESP ENG | | |
| FINISH BLACK | | MFG ENG | | |
| NEXT ASSY | USED ON | QUAL ENG | | |
| APPLICATION | | DO NOT SCALE DRAWING | | |
| SIZE A | DWG. NO. - | SCALE | CAD FILE: | REV. OF SHEET OF |